

# Old home of Jesters transformed into store of exclusively Sheffield products



What used to be the popular card shop Jesters has now been transformed into a store selling exclusively Sheffield-made gifts and cards.

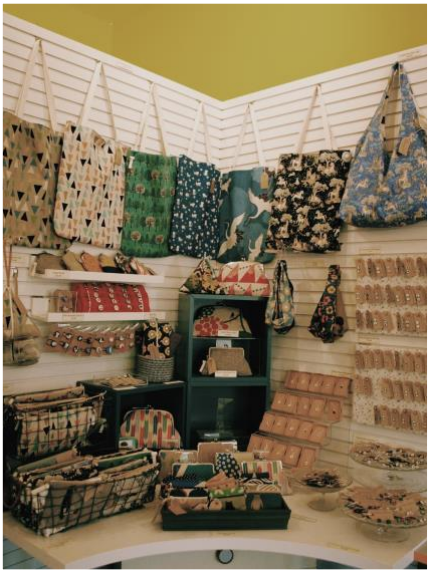
Makers of Sheffield, on the corner of Ecclesall and Sharrowvale Road is the sister shop of the Sheffield Makers store in the Winter Gardens, which opened three years ago by Kate Cooper.

*“It was only supposed to be a Christmas pop-up shop, but it proved so popular that I’s now been open for three years.”*

Kate now co-owns the Ecclesall venture with fellow maker Steph Jenkins, who has been selling her products at the original makers store since its beginning.

The shop stocks products from over 40 different Sheffield makers, so when Steph and Kate put out a request for people to help prepare the shop for opening they were delighted that so many makers and community members alike were willing to give up their time.

*“The community part of having a shop like this is the best part.”*



The shop opened its doors to the public on 22<sup>nd</sup> October, just six days after receiving the keys, and has proved extremely popular with the locals, Steph puts that down to their unique selling point, all the products being 100% Sheffield.

*“Customers know that in buying from us their money is going back into the community, not some distant lands.”*

Makers of Sheffield is opened daily.

